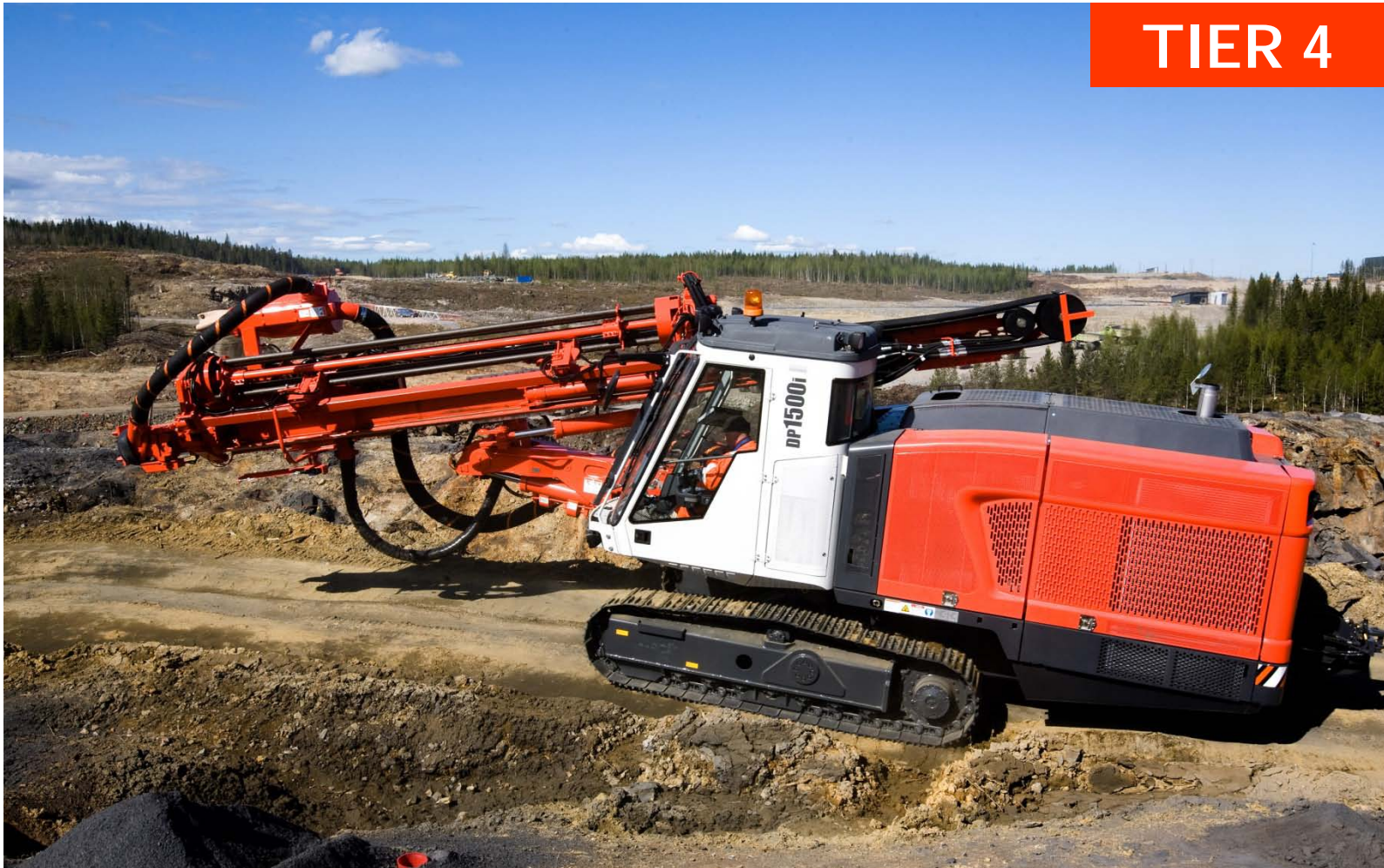


# Sandvik DP1500i

## Surface Top Hammer Drills

TIER 4



Sandvik DP1500i is intelligent, self-propelled, self-contained, crawler based surface drilling rig equipped with a cabin and a rod changer.

DP1500i with practical intelligence fits perfectly for production drilling in large quarries or open pit mines and construction work sites. It suits well also for wall control and development works. To customize the rig it can be equipped with a variety of options to meet special requirements.

Hole Diameter:	89 - 152 mm (3 ½" - 6")
Rock Tools:	51 and 60 mm (2" and 2 ¾") rods or 87 mm (3 ½") tubes
Rock Drill:	33 kW
Engine Output:	287 kW
Flushing Air:	14 m <sup>3</sup> /min, up to 10 bar
Production Capacity:	2,0 Mt/year
Total Weight	21 900 kg

## STANDARD COMPONENTS

Rock drill	HL 1560T, hydraulic
Feed	LF 1514 HR with hose reel
Rod changer	RC 1614
Boom	ZB 1550 H, telescopic
Carrier	FL 6, oscillating
Powerpack	Diesel driven, hydraulic pumps and on board compressor
Hydraulic system	Electric load sensing
Cabin	Ergo cool
Dust collector	DC 1550, hydraulic
Working lights	15 pcs
Gauge set	For accumulator pressure checking
Reversing alarm	
Movable drill steel support	
Suction shut down for water holes	
Flushing control automatics	
Manuals	1 x paper copy 1 x CD-ROM (ToolMan)

## THE JAWS FOR DRILL STEELS

Drill steel type	Drill steel diameter	Recommended hole diameter
Extension rods / MF rods	51 mm 2"	89 - 127 mm 3 ½" - 5"
MF-rods	60 mm 2 ¾"	102 - 140 mm 4" - 5 ½"
Pilot tube	76 mm 3"	89 - 127 mm 3 ½" - 5"
Pilot tube	87 mm 3 ½"	102 - 140 mm 4" - 5 ½"
Tubes	87 mm 3 ½"	102 - 152 mm 4" - 6"

## ADJUSTMENT INFORMATION FOR DELIVERY

### Rotation motor selection

Rotation motor OMT 400  
for 89 - 127 mm, 3 ½" - 5" holes

Rotation motor OMT 500  
for 127 - 152 mm, 5" - 6" holes

### Extension rod lengths

3 660 mm	12'
4 270 mm	14'

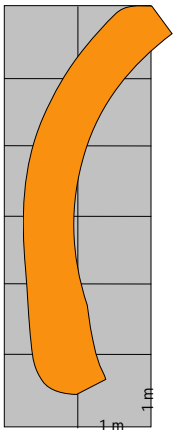
## SELECTION OF OPTIONS

1.	Air conditioning
2.	Cooler bag in cabin
3.	Radio and CD-MP3 player
4.	Reversing camera
5.	Roller blinds for cabin windows
6.	Vacuum cleaner for cabin
7.	GPS aiming device for TIM and TIMi inclined holes
8.	TIM3D navigation system
9.	TIMi for inclined holes and hole depth measuring
10.	TIMi for vertical holes and hole depth measuring
11.	TIMi laser level based depth measuring
12.	Automatic feed alignment for TIMi
13.	One hole automatic drilling down to preset depth
14.	Power extractor
15.	Readiness for Power Extractor
16.	Feed support for soft ground
17.	Horizontal drilling kit
18.	LF 1522 feed with hose reel ( max starter rod 20 ft )
19.	Thread greasing
20.	Thread greasing with 5 gallon bucket
21.	Rollers for rod changer
22.	Sampling device
23.	Anti- freeze system for air lines
24.	Flap feeder for dust collector
25.	Dustmizer
26.	DustMizer Cold including water injection system and heater
27.	Water injection system
28.	Guides for grousers

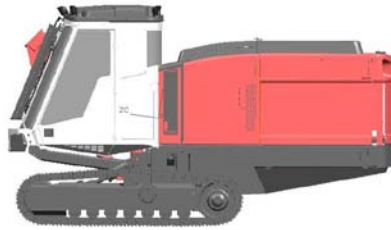
29.	Single bar grouser plates
30.	Towing hook
31.	Xenon lights, 9 pcs
32.	Hydraulic rear ground support
33.	Fuel powered heater for engine and cabin
34.	Fuel powered heater for engine, cabin and water tank
35.	Readiness for fuel powered heater
36.	Electric fuel filling pump
37.	Electric water filling pump
38.	Fast fill connection for engine coolant, hydraulic and engine oils
39.	Fast fill connection for fuel and water tanks
40.	Grinder Sandvik RG420H
41.	Central lubrication system Sandvik
42.	Fire suppression system Sandvik, automatic
43.	Biodegradable hydraulic oil, Shell Naturelle HFE 46 or HFE 68
44.	Kit for alternative steels, each
45.	Tube drilling kit
46.	First service kit for DP1500i
47.	Special tools for HL 1560 T, field kit
48.	Special tools for HL 1560 T, compete
49.	Extra manuals, price will be added according to pricing sheet
50.	Security+ (Silver, Gold or Platinum)
51.	SanRemo (Silver, Gold or Platinum)

\*) replaces standard component

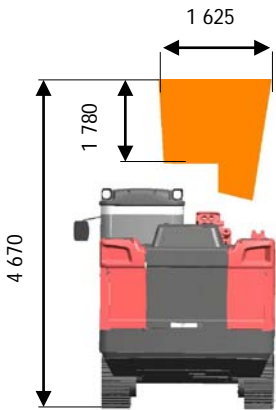
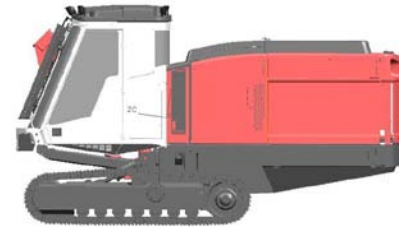
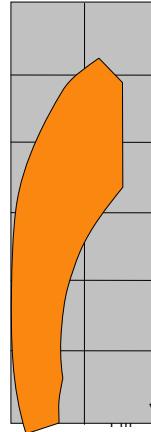
## COVERAGE AREA



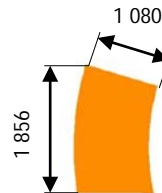
Coverage area  
horizontal drilling, sideways



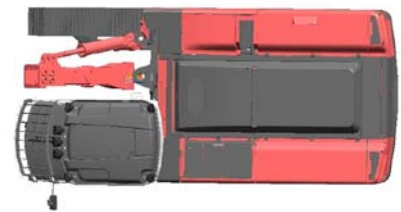
Coverage area  
vertical drilling



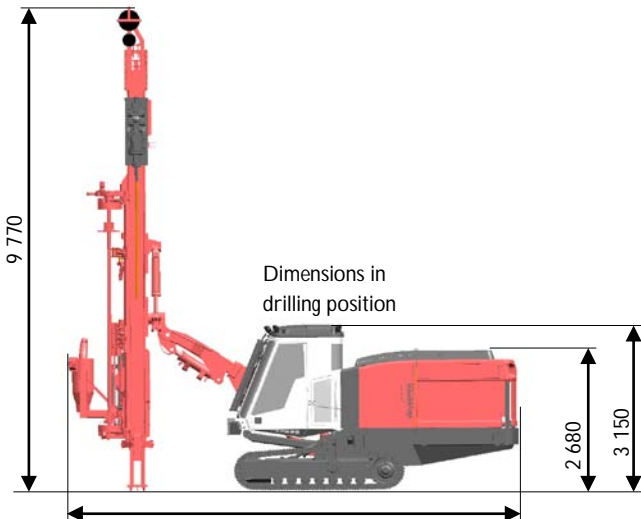
Coverage area  
horizontal drilling, forwards



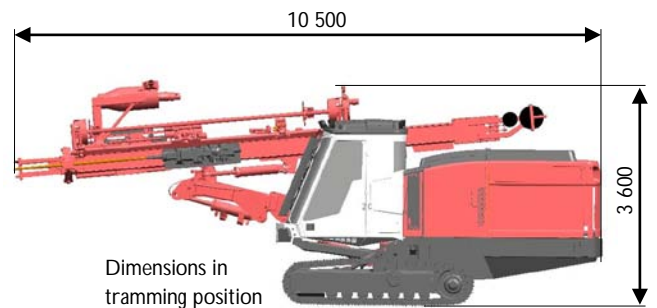
Coverage area  
vertical drilling



## TRAMMING AND TRANSPORT DIMENSIOS



Dimensions in  
drilling position



Dimensions in  
tramping position

Weight	21 900 kg
Width	2.5 m
Height	3.2 m
Total length	11.5 m

Sandvik Mining and Construction reserves the right to change this specification without further notice.